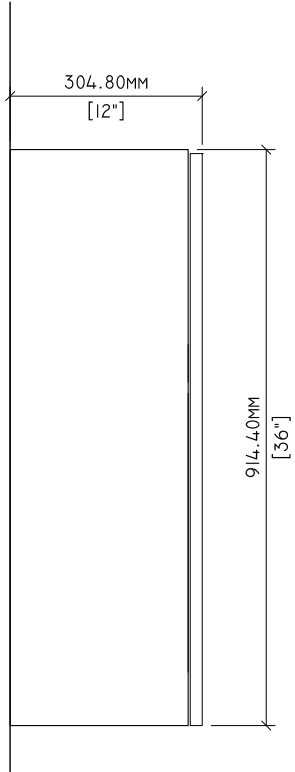
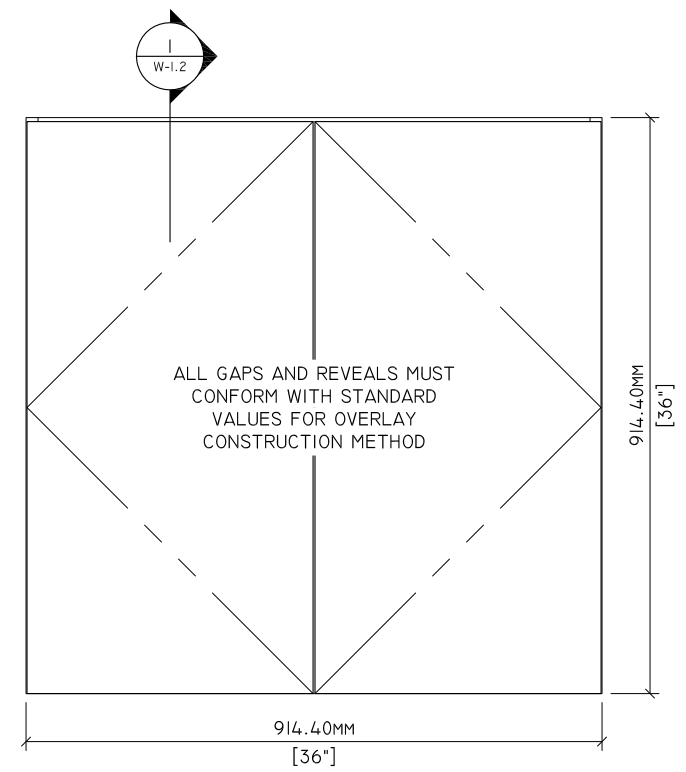


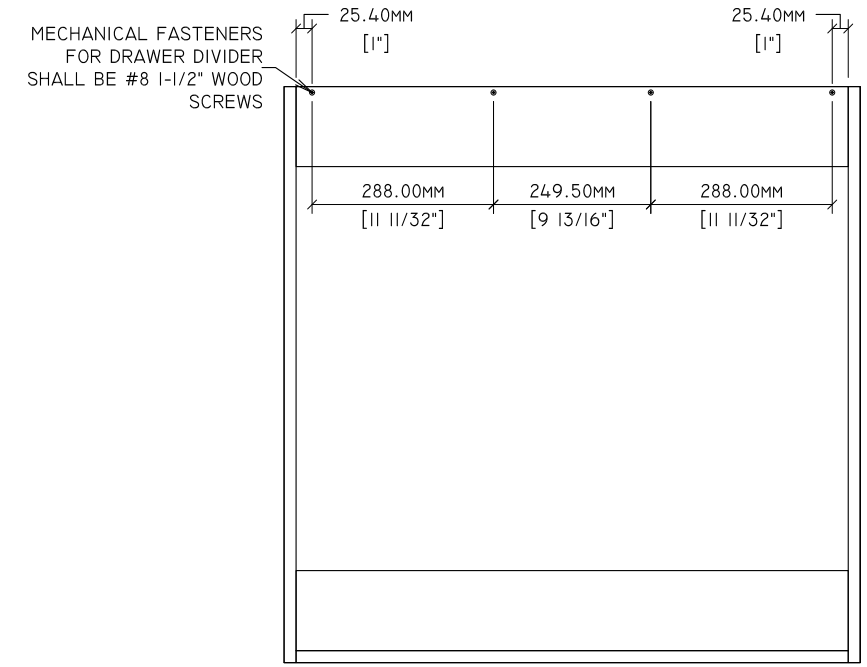
1 PLAN
W-1.1 1" = 1'-0"



2 SIDE ELEVATION
W-1.1 1" = 1'-0"



3 ELEVATION
W-1.1 1" = 1'-0"



4 BACK ELEVATION
W-1.1 1" = 1'-0"

MATERIAL NOTES

ITEM	NOM. THICK	CORE MATERIAL	CORE GRADE	FACE MATERIAL	BACK MATERIAL
LEFT VERTICAL SIDE	3/4"	VENEER CORE	N/A	RAW	RAW
RIGHT VERTICAL SIDE	3/4"	VENEER CORE	N/A	RAW	RAW
TOP HORIZONTAL COMPONENT	3/4"	VENEER CORE	N/A	RAW	RAW
BOTTOM HORIZONTAL COMPONENT	3/4"	VENEER CORE	N/A	RAW	RAW
ADJUSTABLE SHELF	1"	VENEER CORE	N/A	RAW	RAW
VERTICAL BACK COMPONENT	1/4"	VENEER CORE	N/A	RAW	RAW
HINGED DOORS	3/4"	VENEER CORE	N/A	RAW	RAW
NAILER COMPONENT	3/4"	VENEER CORE	N/A	RAW	RAW

PERMISSIBLE TOLERANCES

- PERMISSIBLE TOLERANCES, PROVIDED ALL AESTHETIC STANDARD REQUIREMENTS ARE MET:
 - STRETCHERS AND NAILERS MAY ALLOW FOR A TOLERANCE OF +/- 1.6MM [1/16"] IN WIDTH
 - MACHINED JOINERY AND FASTENERS USED FOR STRUCTURAL PERFORMANCE MUST MAINTAIN SPACING PATTERN BASED ON TESTED PRODUCT AND ENGINEERING DRAWINGS
 - MACHINING +/- 1 MM [.039"], EXCLUDING DRILL DIAMETERS
 - ADDITIONAL FASTENERS AND/OR ADHESIVE MAY BE USED TO MEET AESTHETIC REQUIREMENTS

*SUBJECT TO CHANGE WITHOUT NOTICE. LATEST EDITION WILL BE ENFORCED.

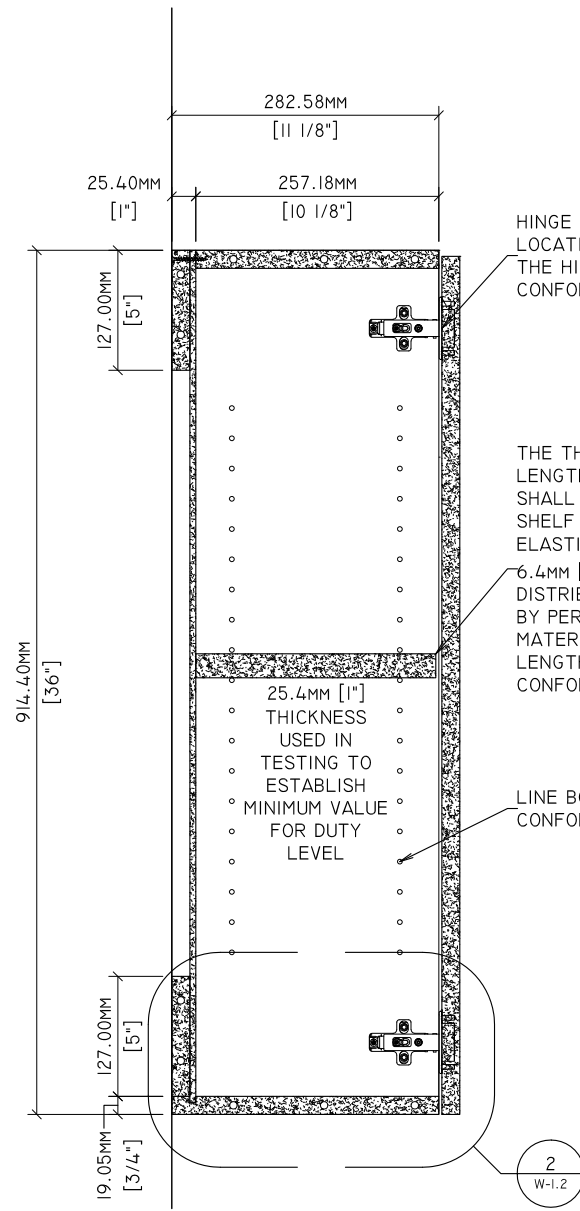
GENERAL NOTES

- THESE DRAWINGS DO NOT INDICATE CONFORMANCE WITH AWI STANDARDS. MANUFACTURERS SHALL ACQUIRE AN OFFICIAL AWI TEST REPORT IN ORDER TO INDICATE CONFORMANCE.
- CABINET SIZE AND CONFIGURATION MAY BE ALTERED AS LONG AS JOINERY, SPACING, AND LOCATION REQUIREMENTS ARE FOLLOWED.
- ALL JOINERY SHALL MEET THE TOLERANCES OF AWI STANDARDS.
- DOWELS SHALL BE 8MM X 30MM.
- CONSTRUCTION ILLUSTRATED HEREIN IS CONFORMING FOR ALL FRAMELESS DOOR AND DRAWER OVERLAYS.



Standards Development and Performance Testing
1310 Southerfield Road
Americus, GA 31709

Drawn By:		REVISIONS		SPECIMEN DWG. NO.:
HD		1	-	W-1.1
Reviewed By:	-	2	7/7/2020	JOINERY METHOD NO.: 8MM DOWEL
Revised By:	HKM	3	7/9/2021	SPECIMEN MATERIAL: VENEER CORE
Revised By:	HKM	4	-	BATCH QUANTITY: -
Approved By:	-			SCALE: AS NOTED

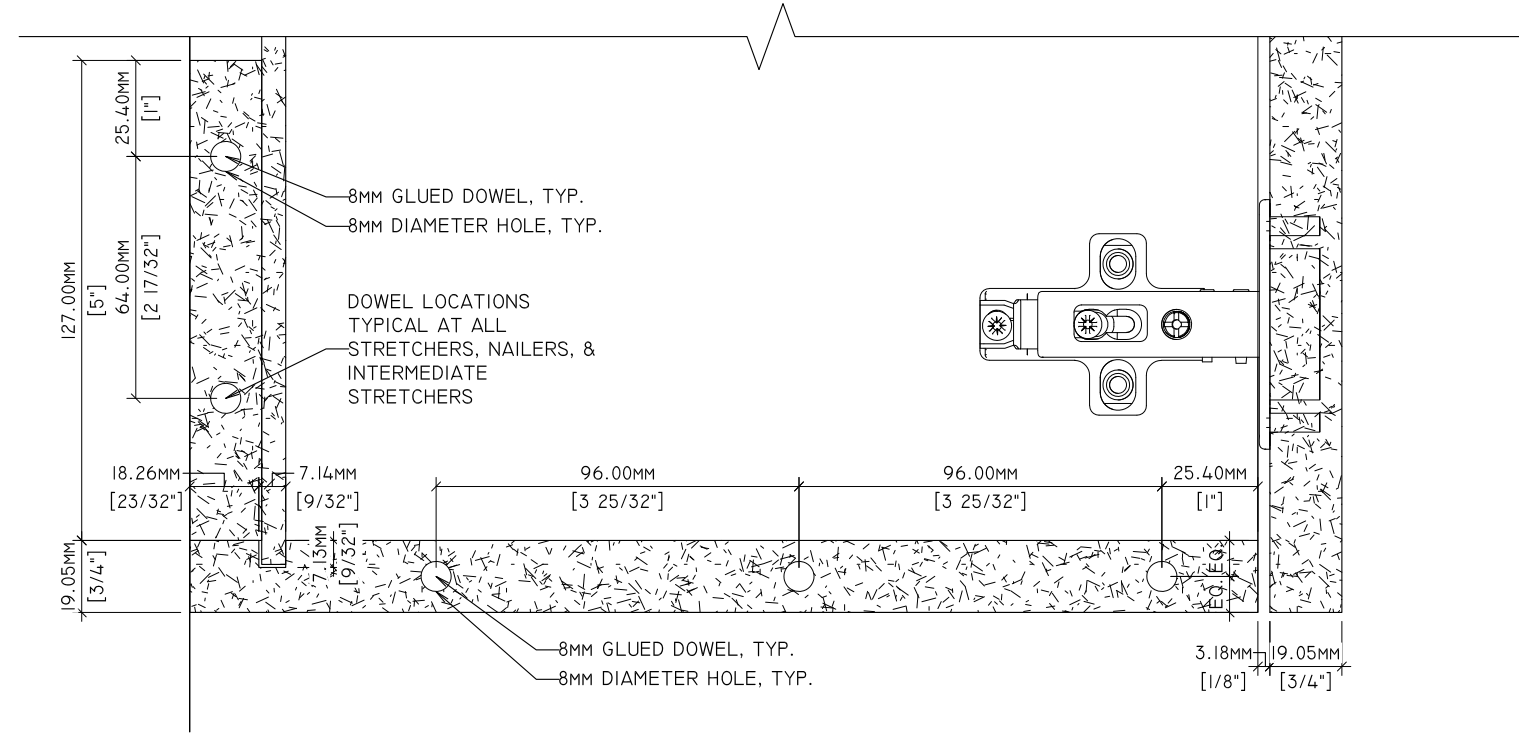


HINGE TYPE AS SPECIFIED, HINGE LOCATION AT THE DIRECTION OF THE HINGE MANUFACTURER AND TO CONFORM WITH AWI STANDARDS.

THE THICKNESS, WIDTH, AND LENGTH FOR AN ADJUSTABLE SHELF SHALL BE DETERMINED BY THE SHELF MATERIAL'S MODULUS OF ELASTICITY (MOE), WITH MAXIMUM 6.4mm [$\frac{1}{4}$] DEFLECTION, UNIFORMLY DISTRIBUTED LOAD AS DETERMINED BY PERFORMANCE DUTY LEVEL, MATERIAL THICKNESS, SHELF LENGTH, AND SHELF WIDTH IN CONFORMANCE WITH 3.3.5.2.

LINE BORE LOCATIONS SHALL CONFORM WITH AWI STANDARDS.

1 SECTION
W-1.2 1-1/2" = 1'-0"



8MM GLUED DOWEL, TYP.
8MM DIAMETER HOLE, TYP.

DOWEL LOCATIONS TYPICAL AT ALL STRETCHERS, NAILERS, & INTERMEDIATE STRETCHERS

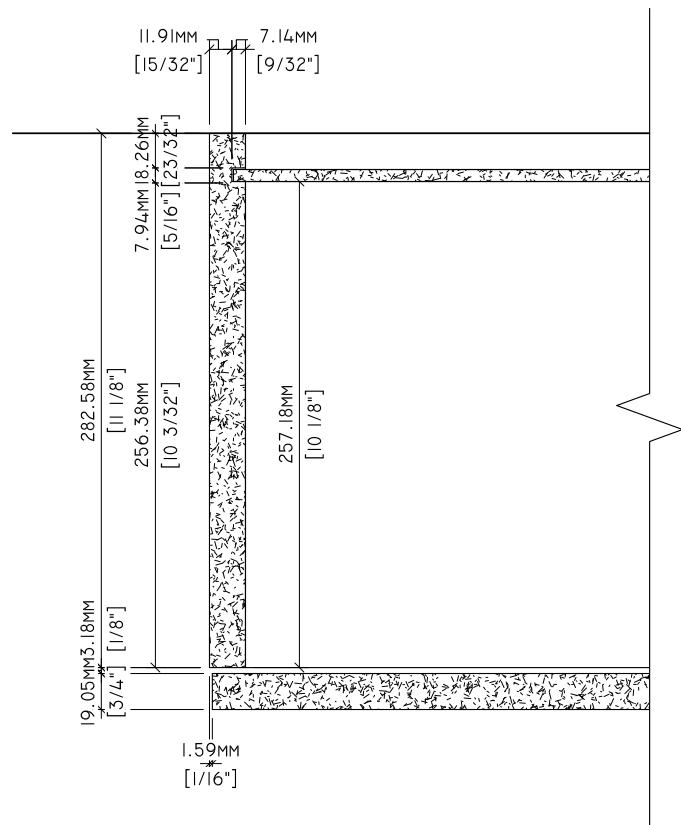
8MM GLUED DOWEL, TYP.
8MM DIAMETER HOLE, TYP.

2 DETAIL
W-1.2 6" = 1'-0"

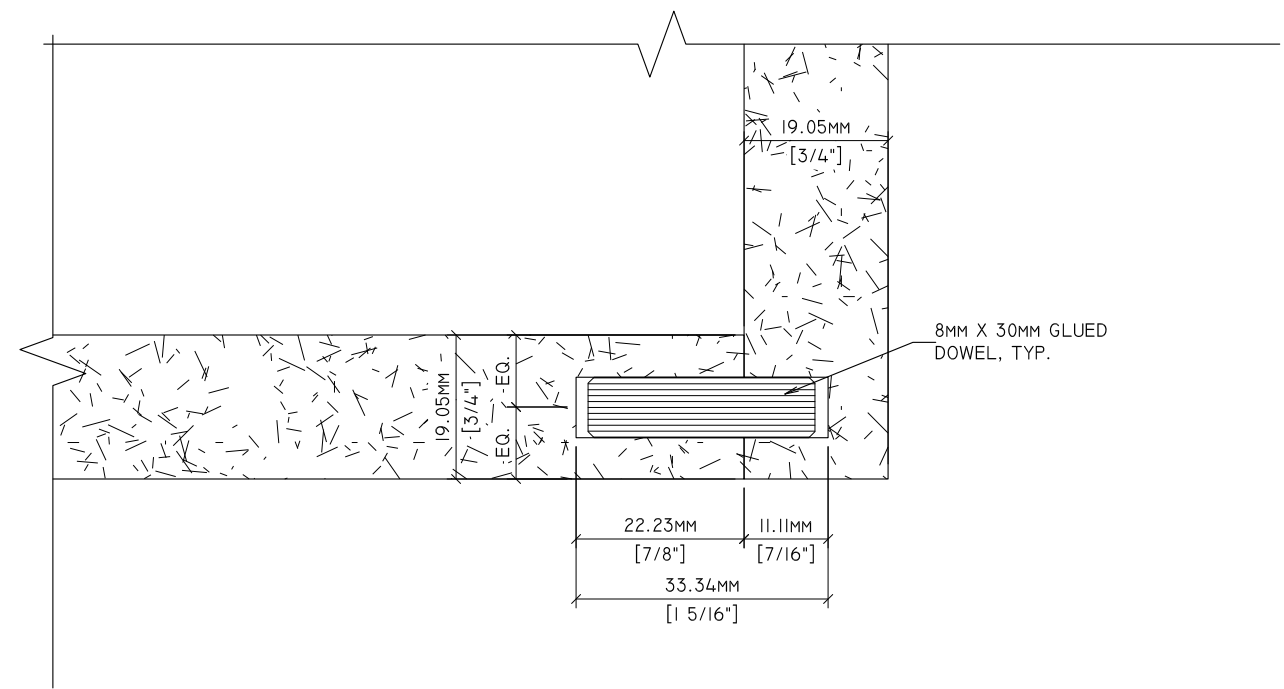


Standards Development and Performance Testing
1310 Southerfield Road
Americus, GA 31709

Drawn By:	HD	REVISIONS		SPECIMEN DWG. NO.: W-1.2
Reviewed By:	-	①	-	JOINERY METHOD NO.: 8MM DOWEL
Revised By:	HKM	②	7/7/2020	SPECIMEN MATERIAL: VENEER CORE
Revised By:	HKM	③	7/9/2021	BATCH QUANTITY: -
Approved By:	-	④	-	SCALE: AS NOTED



1 PLAN DETAIL
W-1.3 3" = 1'-0"



2 DETAIL
W-1.3 12" = 1'-0"

Drawn By:	HD	REVISIONS		SPECIMEN DWG. NO.: W-1.3
Reviewed By:	-	①	-	JOINERY METHOD NO.: 8MM DOWEL
Revised By:	HKM	②	7/7/2020	SPECIMEN MATERIAL: VENEER CORE
Revised By:	HKM	③	7/9/2021	BATCH QUANTITY: -
Approved By:	-	④	-	SCALE: AS NOTED