

## MATERIAL NOTES

ITEM	NOM. THICK	CORE MATERIAL	CORE GRADE	FACE MATERIAL	BACK MATERIAL
LEFT VERTICAL SIDE	3/4"	PARTICLEBOARD	130	TFL	TFL
RIGHT VERTICAL SIDE	3/4"	PARTICLEBOARD	130	TFL	TFL
TOP HORIZONTAL COMPONENT	3/4"	PARTICLEBOARD	130	TFL	TFL
BOTTOM HORIZONTAL COMPONENT	3/4"	PARTICLEBOARD	130	TFL	TFL
ADJUSTABLE SHELF	1"	PARTICLEBOARD	130	RAW	RAW
FIXED SHELF	1"	PARTICLEBOARD	130	RAW	RAW
VERTICAL BACK COMPONENT	1/4"	PARTICLEBOARD	130	TFL	RAW
HINGED DOORS	3/4"	PARTICLEBOARD	130	TFL	TFL
NAILER COMPONENT	3/4"	PARTICLEBOARD	130	TFL	TFL

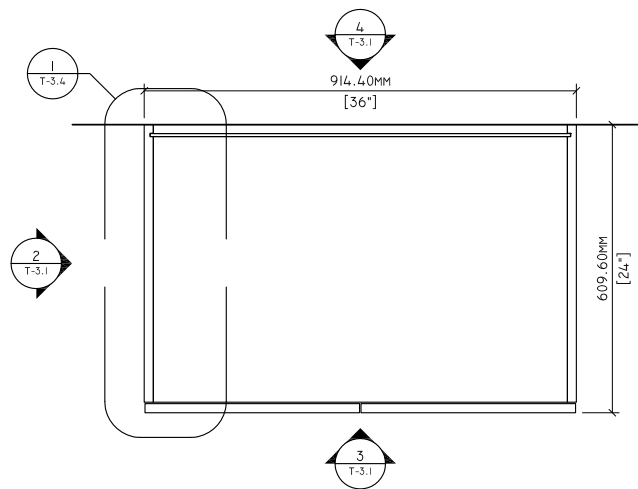
## PERMISSIBLE TOLERANCES

- PERMISSIBLE TOLERANCES, PROVIDED ALL AESTHETIC STANDARD REQUIREMENTS ARE MET:
  - STRETCHERS AND NAILERS MAY ALLOW FOR A TOLERANCE OF +/- 1.6MM [1/16"] IN WIDTH
  - MACHINED JOINERY AND FASTENERS USED FOR STRUCTURAL PERFORMANCE MUST MAINTAIN SPACING PATTERN BASED ON TESTED PRODUCT AND ENGINEERING DRAWINGS
  - MACHINING +/- 1 MM [.039"], EXCLUDING DRILL DIAMETERS
  - ADDITIONAL FASTENERS AND/OR ADHESIVE MAY BE USED TO MEET AESTHETIC REQUIREMENTS

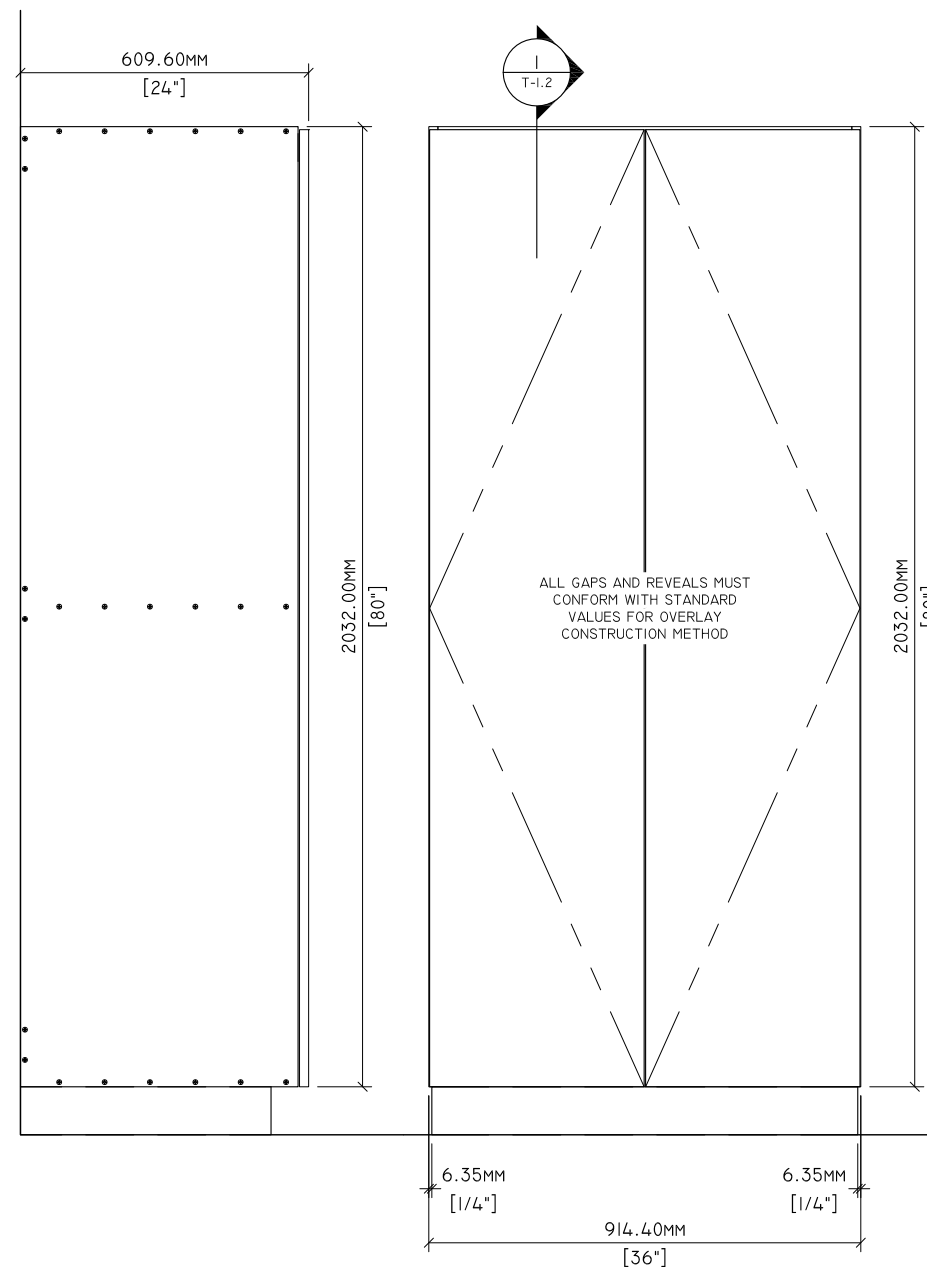
\*SUBJECT TO CHANGE WITHOUT NOTICE. LATEST EDITION WILL BE ENFORCED.

## GENERAL NOTES

- THESE DRAWINGS DO NOT INDICATE CONFORMANCE WITH AWI STANDARDS. MANUFACTURERS SHALL ACQUIRE AN OFFICIAL AWI TEST REPORT IN ORDER TO INDICATE CONFORMANCE.
- CABINET SIZE AND CONFIGURATION MAY BE ALTERED AS LONG AS JOINERY, SPACING, AND LOCATION REQUIREMENTS ARE FOLLOWED.
- ALL JOINERY SHALL MEET THE TOLERANCES OF AWI STANDARDS.
- DOWELS SHALL BE 8MM X 30MM.
- CONSTRUCTION ILLUSTRATED HEREIN IS CONFORMING FOR ALL FRAMELESS DOOR AND DRAWER OVERLAYS.

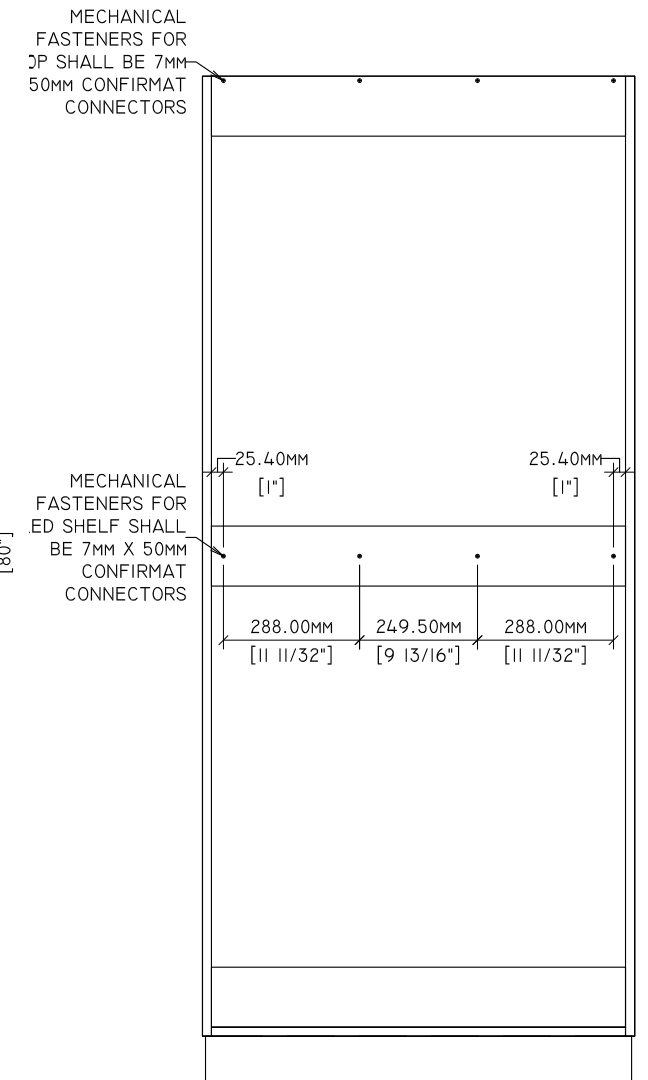


1 PLAN  
T-2.1 1" = 1'-0"



2 SIDE ELEVATION  
T-2.1 3/4" = 1'-0"

3 ELEVATION  
T-2.1 3/4" = 1'-0"

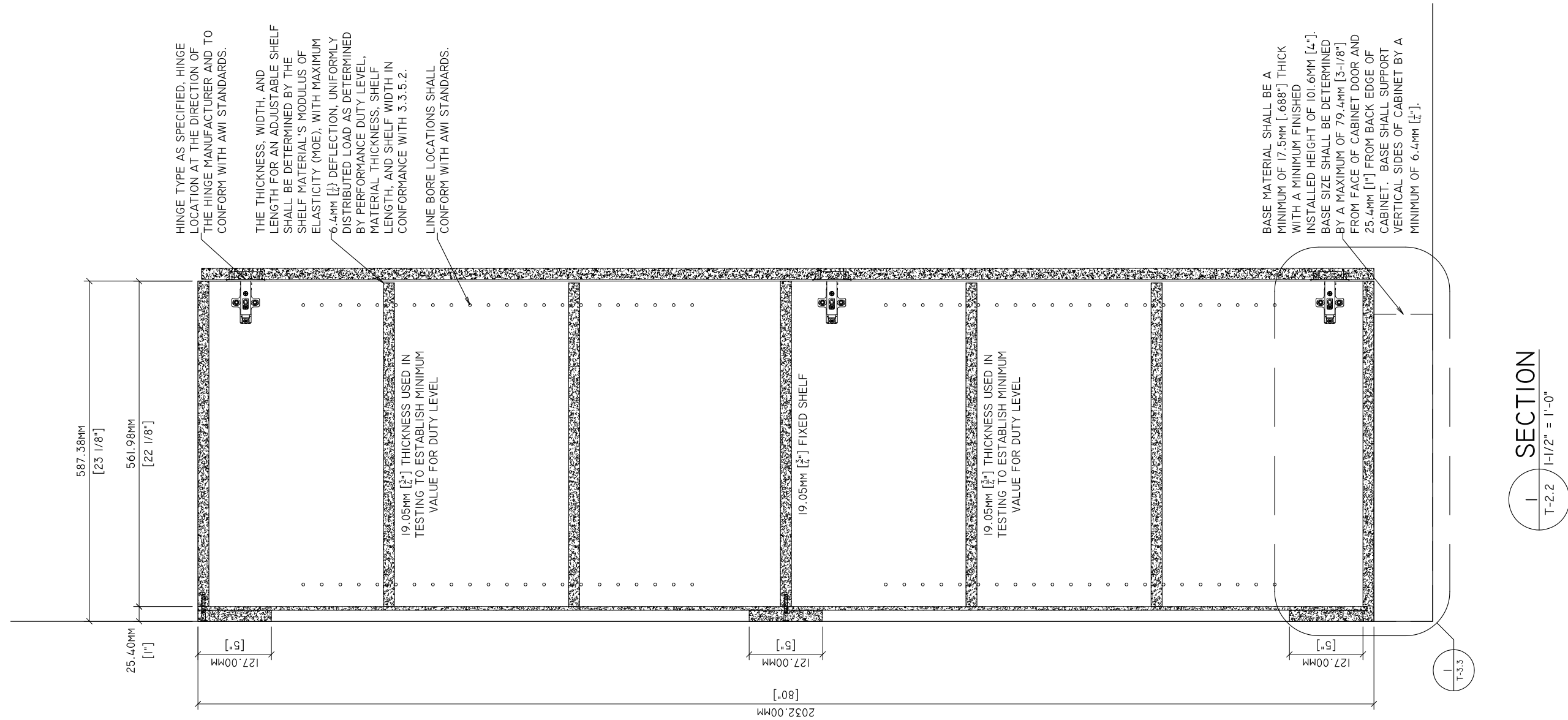


4 BACK ELEVATION  
T-2.1 3/4" = 1'-0"



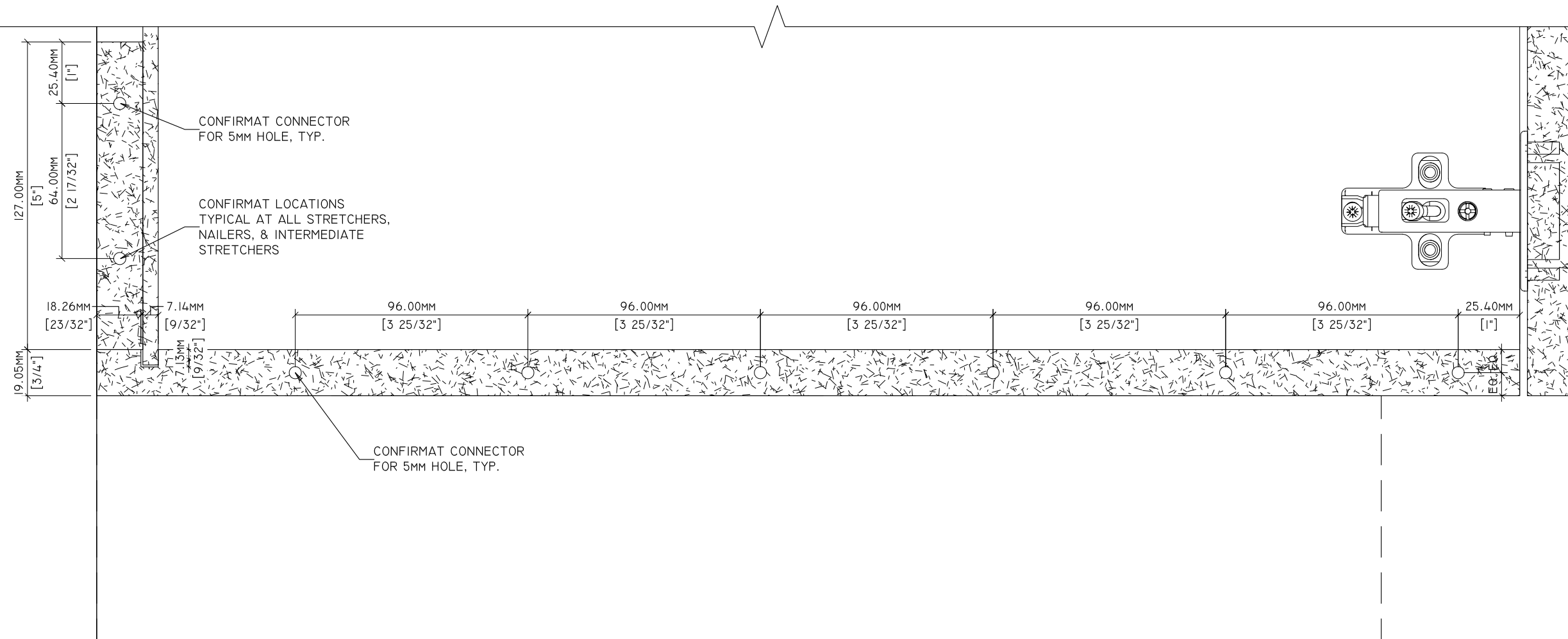
**Standards Development and Performance Testing**  
1310 Southerfield Road  
Americus, GA 31709

Drawn By:	HD	REVISIONS		SPECIMEN DWG. NO.:
Reviewed By:	-	1	-	JOINERY METHOD NO.: 7nn X 50mm CONFIRMAT
Revised By:	-HKM	2	- 7/7/2020	SPECIMEN MATERIAL: PARTICLEBOARD M2
Revised By:	-	3	-	BATCH QUANTITY: -
Approved By:	-	4	-	SCALE: AS NOTED



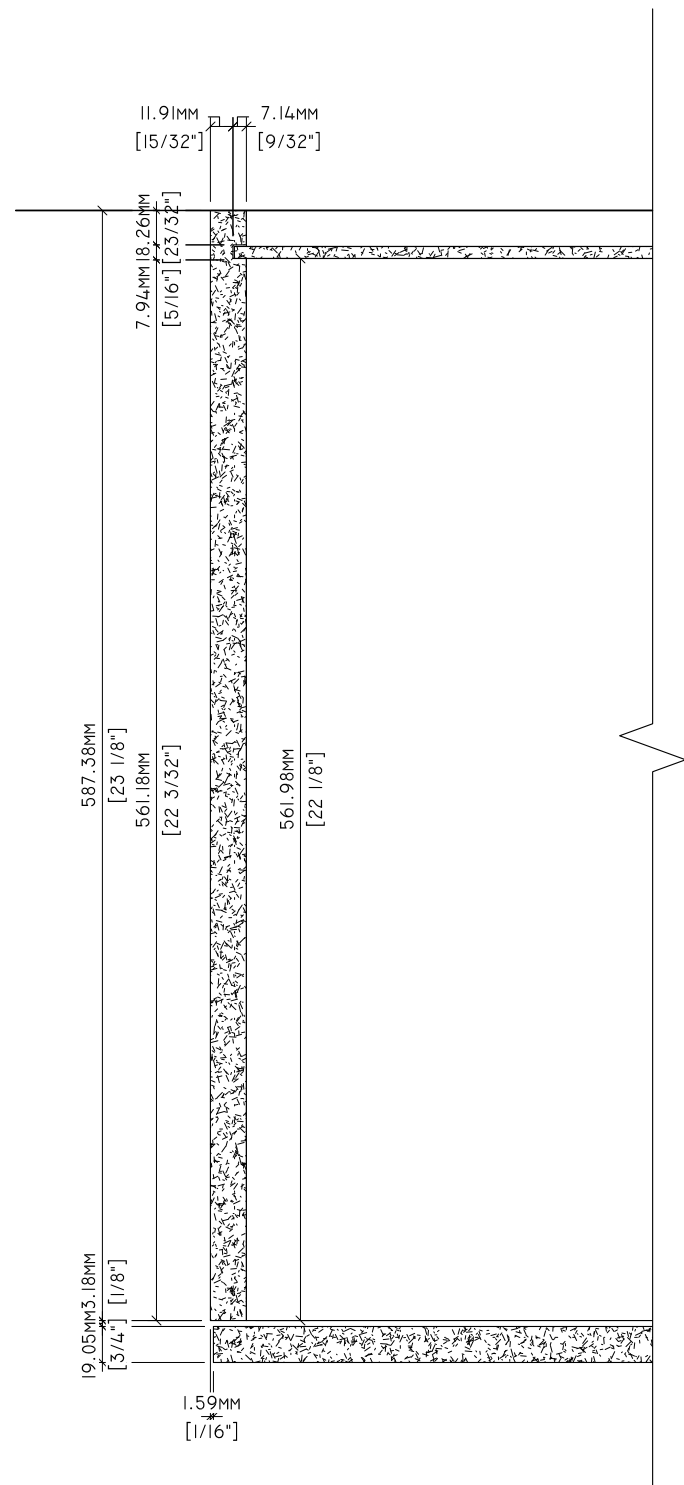
**Standards Development and Performance Testing**  
 1310 Southerfield Road  
 Americus, GA 31709

Drawn By:	HD	<b>REVISIONS</b>		SPECIMEN DWG. NO.: T-2.2
Reviewed By:	-	①	-	JOINERY METHOD NO.: 7nn X 50mm CONFIRMAT
Revised By:	HKM	②	- 7/7/2020	SPECIMEN MATERIAL: PARTICLEBOARD M2
Revised By:	-	③	-	BATCH QUANTITY: -
Approved By:	-	④	-	SCALE: AS NOTED

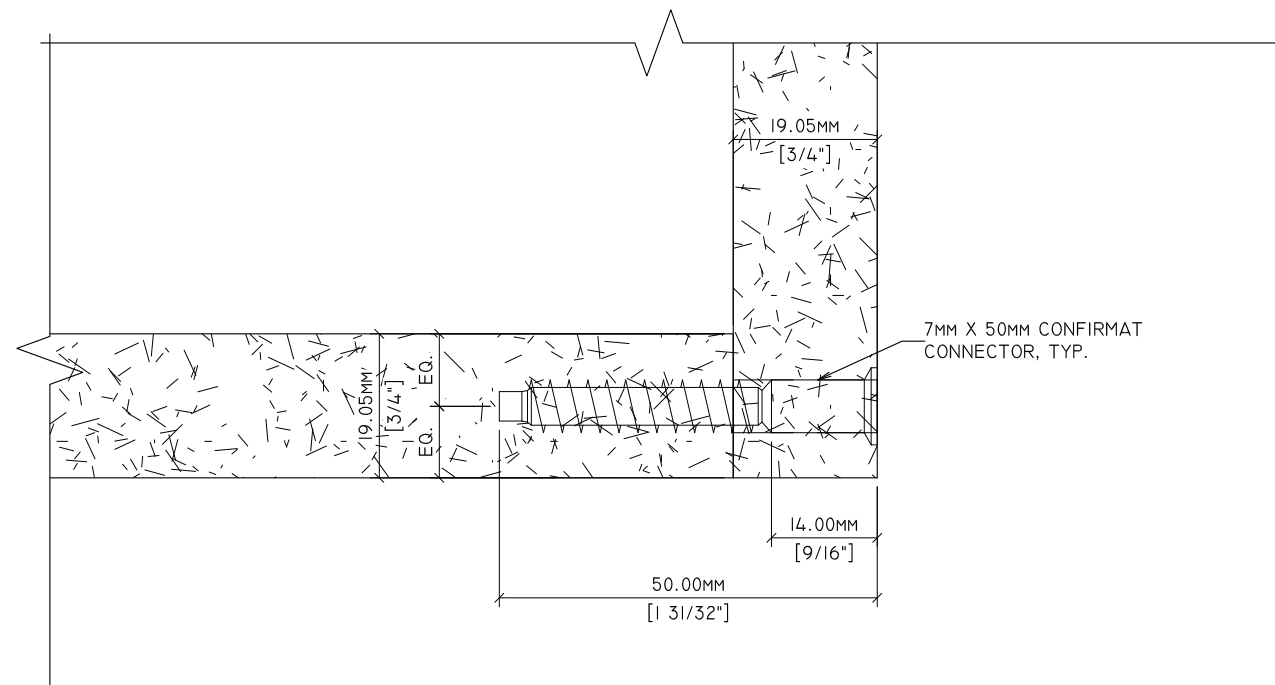


1  
T-2.3  
DETAIL  
6" = 1'-0"

Drawn By:	HD	<b>REVISIONS</b>		SPECIMEN DWG. NO.: T-2.3
Reviewed By:	-	①	-	JOINERY METHOD NO.: 7nn X 50mm CONFIRMAT
Revised By:	HKM	②	- 7/7/2020	SPECIMEN MATERIAL: PARTICLEBOARD M2
Revised By:		③	-	BATCH QUANTITY: -
Approved By:	-	④	-	SCALE: AS NOTED



1 PLAN DETAIL  
T-2.4 3" = 1'-0"



2 DETAIL  
T-2.4 12" = 1'-0"

Drawn By:	HD	<b>REVISIONS</b>		SPECIMEN DWG. NO.: T-2.4
Reviewed By:	-	①	-	JOINERY METHOD NO.: 7nn X 50mm CONFIRMAT
Revised By:	HKM	②	- 7/7/2020	SPECIMEN MATERIAL: PARTICLEBOARD M2
Revised By:		③	-	BATCH QUANTITY: -
Approved By:	-	④	-	SCALE: AS NOTED